

STAR PRIMARY SCHOOL NEWS LETTER



January 2018

Head Teacher's Message

Dear Parents/Carers,

I am really pleased to welcome you all back after the holidays. It was wonderful to see all the children again this week as we start another very exciting term here at Star.

We are all very excited about the start of the front playground development. Please read this newsletter carefully to ensure that you know about the new lining up arrangements which will be effective from **Monday 8th January 2018**. We apologise in advance for the disruption that will be caused but I am sure your child will be delighted with the new playground which we hope will be completed by the summer term.

A reminder about the PIMs for the Spring term. If you are not able to attend the meeting, just ask the class teacher for a copy of the presentation and curriculum overview. The dates for all meetings are included in this newsletter.

Before we move completely into 2018, I would just like to take a moment to thank parents and staff again for making the Winter Market such a huge success. We raised an amazing £2 980 towards our playground development.

This term sees the start of our Shakespeare topic and children are looking forward to Theatre workshops and shows next week. Year 5 will also be visiting the Globe Theatre next Wednesday.

Kind Regards,
Ms Von
Head Teacher

Important Dates:

Parent Information Meetings: Community Room

Reception: 08/01/18 at 9am

Year 3: 09/01/18 at 9am

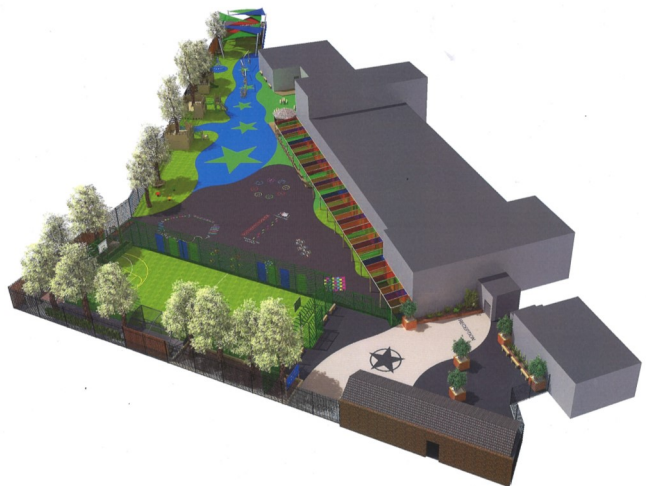
Year 1: 09/01/18 at **2:30pm**

Year 4: 10/01/18 at 9am (Including York Trip info)

Year 5: 11/01/18 at 9am

Year 2: 11/01/18 at **2:30pm**

Year 6: 12/01/18 at 9am



Playground Works!!!

Please pay careful attention to the map overleaf, showing the temporary lining up positions for your child's class. There will be no access across the main playground as of Monday and parents will have to use the pavement along Star Lane in order to access the Early Years Entrance Gate.



School Uniform

We were very pleased with the response from parents to improve the PE uniform. It is very important that children look and feel smart in school. Please remember that children must have sensible black school shoes (not trainers). Girls are not allowed to wear boots to school. Could I please appeal to parents to check their children's uniform has their name and class written inside the label. If your child has brought home an item of clothing that does not belong to them then it needs to be returned to the school. Children cannot keep or wear uniform that belongs to other children. Thank you for your continued support to keep our school the smartest one in Newham!



Year 6 children are to enter via the Hilda Road Entrances and go straight up to their classes at 8:45am.

