



# Simple Notes

Name: .....

Class: .....

Each week you will work independently on the next piece of music in your book. As you are able to play it, your teacher will ask you to come and show them and you will move on to the next piece of music.

Use your hand stave and ta and teti to work out the music yourself.

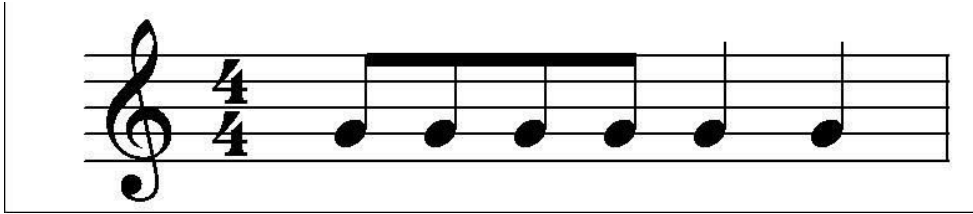
Good luck!!!



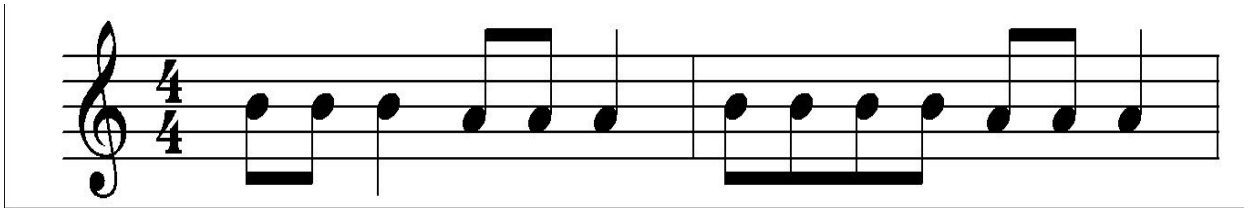
# Week 1

---

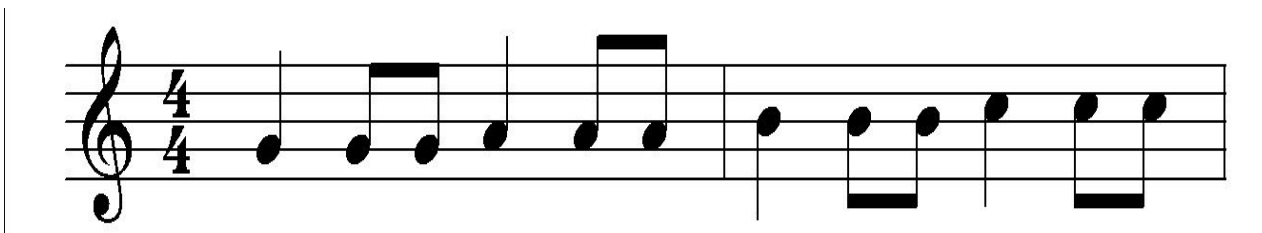
1.



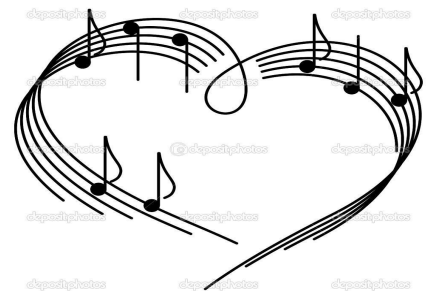
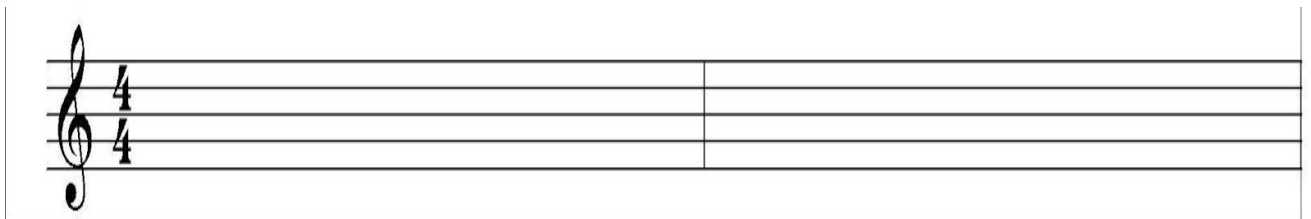
2.



3.



4.



# Week 2

---

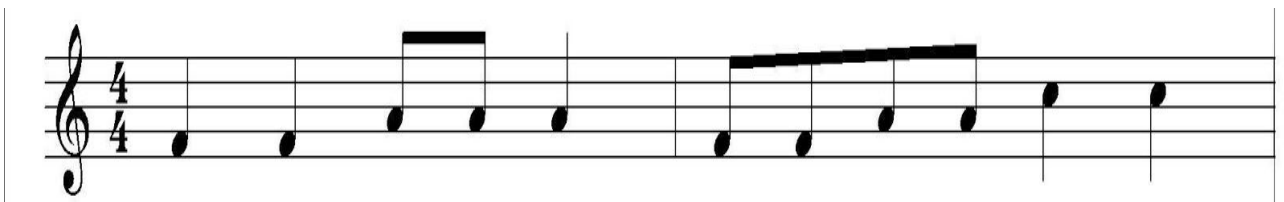
1.



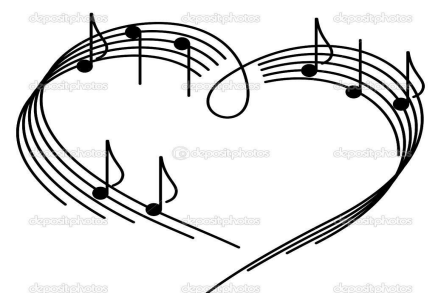
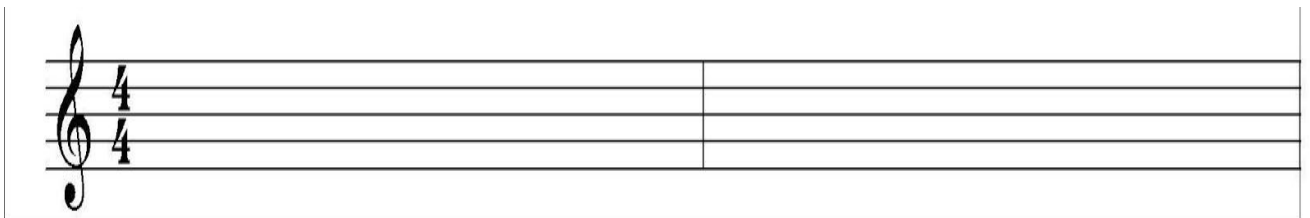
2.



3.



4.



# Week 3

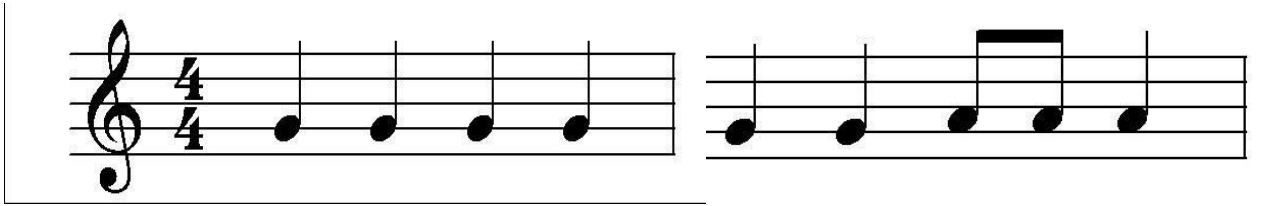
---

1.



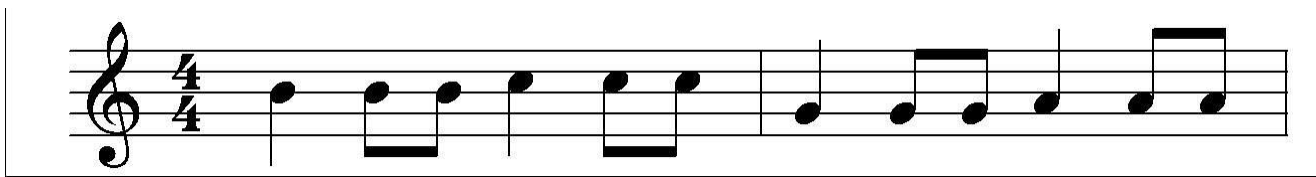
.....

2.



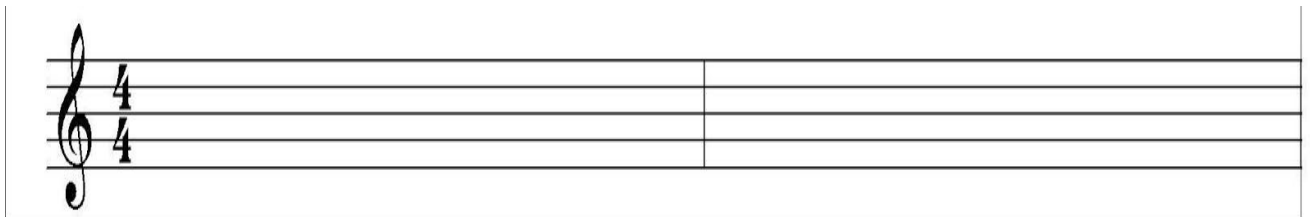
.....

3.

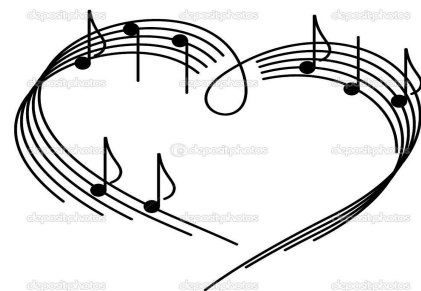


.....

4.



.....



# Week 4

---

1.



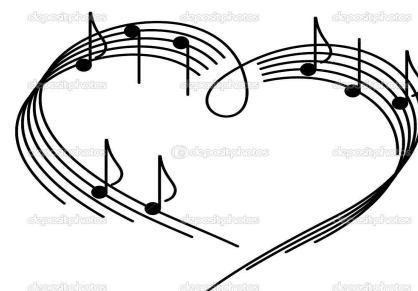
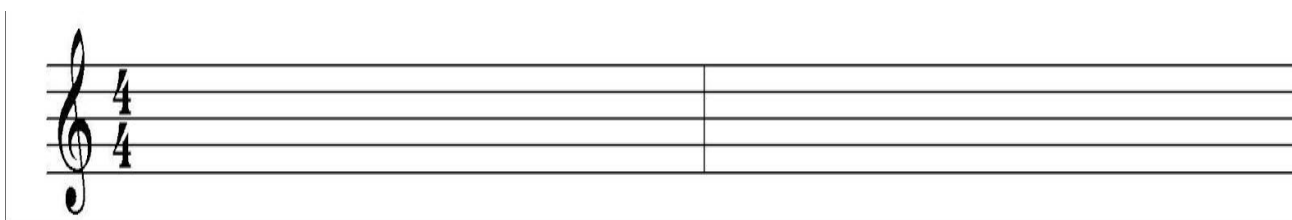
2.



3.



4.



# A Longer Tune

This is independent work.

Remember your hand stave and ta, teti, too and toowoo.

Think about the rests.

**How about This?**

PRACTICE 7 CB TEMPO

PERFORMANCE 8 CB TEMPO

By Chloe and Sarah

4

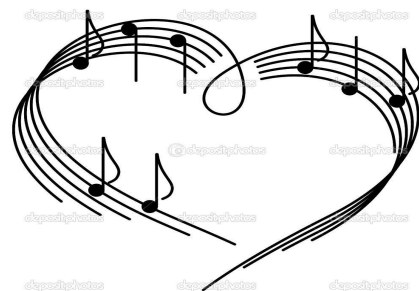
*f*

*p*

*f*

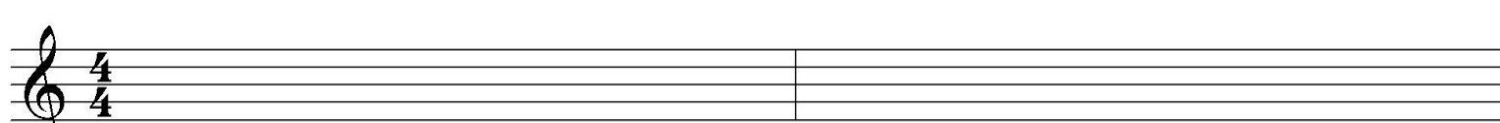
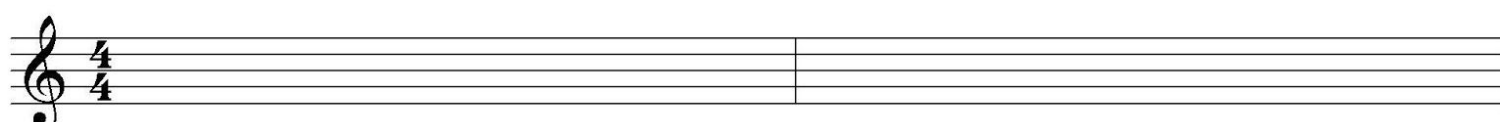
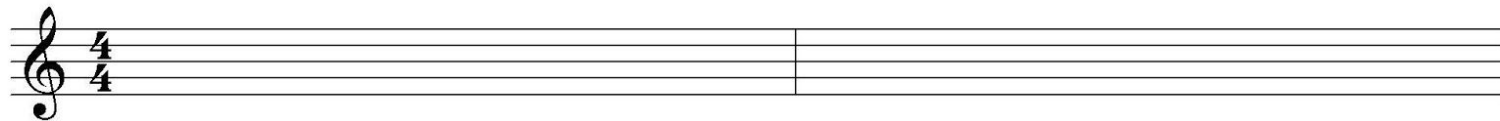
Shh Shh

.....



# My Music

- Write your own tune.
- It must be one that you can play yourself.
- Move by step and only small leaps between notes.
- Remember 4 beats in a bar only.



.....  
.....



A musical staff with a treble clef and a 4/4 time signature. The staff is empty, with a vertical bar line positioned approximately one-third of the way across the staff.

A musical staff with a treble clef and a 4/4 time signature. The staff is empty, with a vertical bar line positioned approximately one-third of the way across the staff.

A musical staff with a treble clef and a 4/4 time signature. The staff is empty, with a vertical bar line positioned approximately one-third of the way across the staff.

A musical staff with a treble clef and a 4/4 time signature. The staff is empty, with a vertical bar line positioned approximately one-third of the way across the staff.

A musical staff with a treble clef and a 4/4 time signature. The staff is empty, with a vertical bar line positioned approximately one-third of the way across the staff.

A musical staff with a treble clef and a 4/4 time signature. The staff is empty, with a vertical bar line positioned approximately one-third of the way across the staff.

A musical staff with a treble clef and a 4/4 time signature. The staff is empty, with a vertical bar line positioned approximately one-third of the way across the staff.

A musical staff with a treble clef and a 4/4 time signature. The staff is empty, with a vertical bar line positioned approximately one-third of the way across the staff.

A musical staff with a treble clef and a 4/4 time signature. The staff is empty, with a vertical bar line positioned approximately one-third of the way across the staff.

A musical staff with a treble clef and a 4/4 time signature. The staff is empty, with a vertical bar line positioned approximately one-third of the way across the staff.

A musical staff with a treble clef and a 4/4 time signature. The staff is empty, with a vertical bar line positioned approximately one-third of the way across the staff.

.....  
.....

If you got this far and completed your own tune, I'll see you in recorder club in year 4.

Well Done!!!

