



SEND Policy – Our Parents' Guide

Star Primary School is a Rights Respecting School



School Mission Statement:

*At Star Primary School we believe that everyone is equally loved and accepted.
Acknowledging the diversity of our community, we...*

- *Provide a broad and balance curriculum encouraging every child to take the opportunity to achieve their full potential;*
- *Nurture positive home, school and community relationships;*
- *Promote tolerance and respect for all people and the world we live in.*

We, at Star Primary School, aim to provide a fully inclusive education for all the children in our care. Special Educational Needs provision is educational provision additional to or different from that generally made for other children

What is SEND?

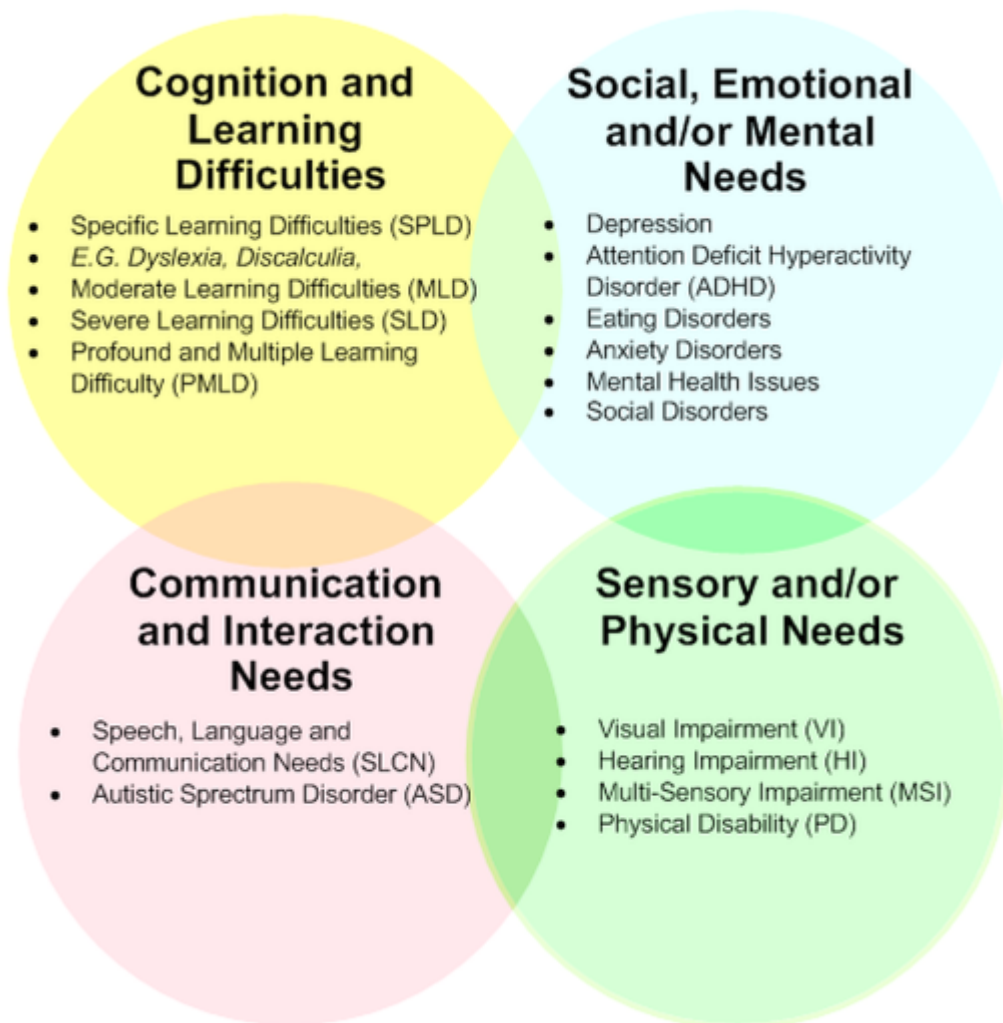
A child or young person has SEND if they have:

- A learning difficulty or disability which calls for special educational provision to be made for him or her
- Significantly greater difficulty in learning than the majority of others at the same age
- A disability that prevents or hinders them from making use of educational facilities.

Categories of SEND

In order to provide the most appropriate and effective level of support for children who are identified as having SEND, our first step is to try and identify the highest area of need for an individual child. The categories of SEND need are:

- Cognition & learning
- Social, emotional & mental health
- Communication & interaction
- Sensory and or physical needs



How to contact our SEND Coordinators

Our school SEND Coordinators (SENDCO)

EYFS and KS 1: Mrs Faria Alam Masud

KS2: Miss Loren Oliver

They can be contacted through the School Office Tel: 0202 7476 5336

Email FAO: SENCO's - sen@star.newham.sch.uk

The Head teacher has overall responsibility for Special Educational Needs & Disability in the School.

On Starting and Leaving School

During the summer term, prior to their children starting school in Reception, parents/carers are invited to the New Parents Information Evening. At this meeting you will be able to talk about your child's needs with the reception class teachers &/or the SENDCO &/or the Head & Deputy Head. For children who may need more support transferring to our school this may start earlier with input from parents/carers, nurseries and local authority.

If a child enters our school 'in year' information will be sought from their previous schools and their parents/carers.

Before transition from Primary to Secondary our SENDCO and Class Teachers will communicate/meet with the SENDCO & Head of Year 7 of both local Secondary schools and all relevant information regarding an individual's needs will be passed on so that the appropriate support remains in place.

Parents/carers work closely with the SENDCO & school staff throughout their child's time at our school.

Provision Maps and Educational, Health and Care Plans (EHCP)

Levels of SEND support needed will vary from child to child and the following plans may be put in place. Initially, children may be placed on our 'monitoring' list, which indicates that we are monitoring their progress and putting provision in place to support their learning. If further action is needed, a child may then move to our SEND Support list, where more targeted provision will be given:

Provision Maps

Provision Maps are drawn up in discussion with parents/carers and the child. Targets are set and actioned by the parent, child and class teacher with support from the SENDCO and other trained staff. These will be reviewed regularly (at least once a term). All progress will be monitored on the school's tracking systems.

Educational, Health and Care Plans (EHCP)

Children with more severe needs will have an Educational, Health & Care Plan (EHCP). These replace the Statements of Special Needs and are issued by the local authority.

Information about the arrangements for identifying, assessing and making provision, including personal budgets, for children with SEND can be found on Newham Council's website:

www.newham.gov.uk > localoffer

The Local Offer is where Newham sets out what is available for 0-25 year olds with

SEN.

Newham SEND Partnership offer information and advice to children, young people and parents/carers about special educational needs and disabilities (SEND).

For more information about the Newham Local Offer please follow link

at: <https://families.newham.gov.uk/kb5/newham/directory/home.page>

www.families.newham.gov.uk

Other outside agencies who might be involved?

- Educational Psychologist (EP)
- Children and Families Support Services (CFCS)
- Speech & Language Therapy (SALT)
- Child & Adolescent Mental Health Services (CAMHS)
- Occupational Therapist (OT)
- Physiotherapists (PT)
- Child development services (CDS)
- Social Care/Family Support
- Learning Centres
- Special Educational Needs and Disability Information, Advice and Support Service (SENDIASS)

Other Policies to guide you

On the school website you will find other relevant school policies to guide you. these can be found on the school website

- Our SEND Information Report
- Full SEND and Inclusion Policy

By order of the Governing Body of Star Primary School

(Signed)_____Dated _____(Head
Teacher)

(Signed)_____Dated _____ (SEND
Link Governor)

Policy Date: September 2023

Review Date: September 2024