



Nurturing &
growing together

Year 2

Autumn Term 2023

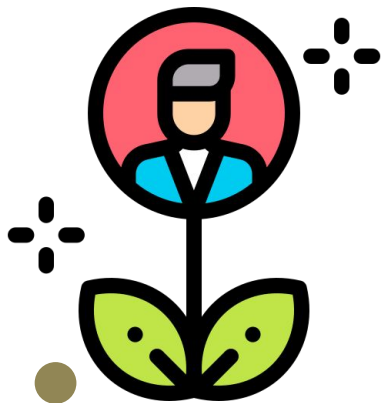
'Every child has the right to an education which must develop every child's personality.' **Article 28 and 29**

WE ARE ALWAYS TRYING TO IMPROVE LEARNING AND OUTCOMES AT STAR



*Each year we decide which parts of school need improving.
We decide what will have a **'BIG'** impact on your child's education.
Star's big five priorities for 2023/24 are...*

The Big Five



Attention +
engagement

Learning
Outcomes

Curriculum

Attendance

Climate Crisis



STAR PRIMARY'S 5 KEY LEARNING FEATURES:



Questioning



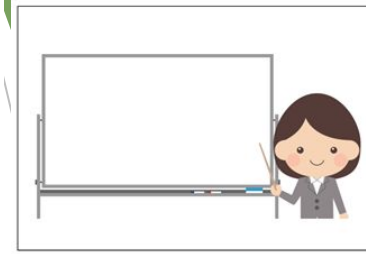
Scaffolding



Vocabulary



Strategic pairings



Modelling



All our teachers, support staff, lunch staff and leaders agree that these 5 ways support and challenge our children to be great learners.

Challenge for families-
Ask your children how teachers help them learn and see what they say?

Who is in the Year Group?

- ▶ Mrs Bagheri - Phase Group Leader
- ▶ Miss Stainsbury - Year Group Leader
- ▶ Miss Patel - Class Teacher
- ▶ Miss Vincent - Class Teacher
- ▶ Ms Viv - Teaching Assistant
- ▶ Ms Jackie - Teaching Assistant
- ▶ Ms Krisztina - Teaching Assistant
- ▶ Ms Aamena - Teaching Assistant
- ▶ Deputy Head with responsibility for the phase - Ms Jennings



'Every child has the right to an education.'

Article 28




Attendance



- ▶ **FACT - Attendance is the key to success for our pupils.**
- ▶ We expect children to come to school **every day**.
- ▶ Your child only needs to be at home if *very unwell*. You must call the school if your child is unwell + the school will advise.
- ▶ Most winter illnesses, such as colds will pass and children should be in school. This is common at this time of year, in all children.
- ▶ Any other illness can be discussed with the pastoral team and advice can be given.
- ▶ **Persistent lateness, unauthorised absence and low percentages of attendance will result in fines and potential local authority involvement.**



EAT YOUR BREAKFAST AT STAR!




A breakfast snack for all pupils at 7:50 am!
Star will be providing a selection of breakfast options to boost energy levels and alertness, ready for learning.



Your child's brighter start will continue with singing in class which helps enhance memory and improve mental health. Singing also releases endorphins, serotonin and dopamine – the 'happy' chemicals that boost your mood and make you feel good about yourself!

We can't wait!





Autumn 1:



RIGHTS -WE ARE FOCUSING ON RESPECT
+ IN RSHE, BUILDING POSITIVE RELATIONSHIPS

More information about our unique curriculum can be found at

<https://star.newham.sch.uk/our-learning/curriculum/>



'Every child has the right to an education which must develop every child's personality.' **Article 28 and 29**

English

Cycle 1
 Narrative
 Character description
 Setting description
 Based on Marcus Rashford



Cycle 2 -
 Present and inform
 Speech competition

Autumn 1:



History Black History with a focus on sports

The story of Jesse Owens and how his successful wasn't valued at the time. How women from African backgrounds found it in hard in sports and were not seen as equals to men in the previous olympics.



RSHE Positive relationships

Focusing on how we can create positive relationships around school and what it takes to be a good friend.

Science Plants

Scientist focus:

- Observation over time (growing cress seeds)
- Parts of a plant
- How a plant reproduces
- Life cycle of a plant



Maths

Numbers to 100
 Place Value
 Addition and Subtraction
 (column method)

MATHS
 NO PROBLEM!

Computing

What is IT?
 How can we stay safe on the internet?
 Who are our trusted adults
 Our typing skills

Sharing Reading



Art Portraits

Da Vinci and Basquiat



Music

Musical weather



RE Creation

We will think and learn about how people think the world was created and how some religions view this.

PE

Team games
 Mastering movements such as running throwing and catching
 Performing simple sequences



Autumn 2: Media Mayhem



RIGHTS -WE ARE FOCUSING ON INDEPENDENCE + IN RSHE, COPING SKILLS

More information about our unique curriculum can be found at

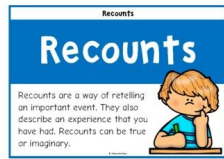
<https://star.newham.sch.uk/our-learning/curriculum/>



'Every child has the right to an education which must develop every child's personality.' **Article 28 and 29**

English
Cycle 1 – Recounts (linking to history)

Cycle 2 – Digital diaries (blogging, linking to history)



Maths
Multiplication and division
Length



Music
Children of the World
Christmas Songs Vocal technique, breathing and performance skills.

Autumn 2:
Media Mayhem



History
The Great Fire of London

SCHOOL TRIP!



RSHE
Coping Skills



Computing
Online safety

What is digital diary (early blogging)?

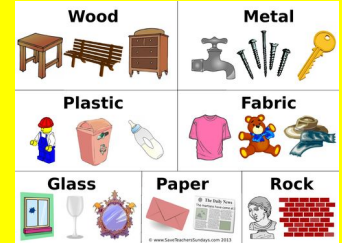


RE
What can we learn from special stories?

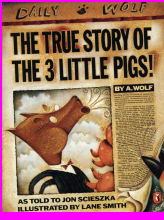
RE visitor



Science
Uses of everyday materials



Sharing Reading



PE
Dance-Movement and music skills.



VISITING A PLACE OF WORSHIP as part of Religious Education:

As part of enriching children's learning each year group is encouraged to visit a place of worship . Children are not asked to join in **any** of the prayers or ceremonies. Children are encouraged to look at the buildings, notice the similarities and differences between places of worship. This is supported by all religious leaders as stated in the Newham Agreed Syllabus that overpins the RE curriculum in Newham. Children visit the 6 main places of worship throughout their journey at Star. If you have any further queries please speak to the YGL or the RE leader at school.



Homework in Year 2

Children will be given a homework sheet on a Friday. This should be handed back to the teacher on the following Friday.

Short burst of homework every night will be the most effective.

Spellings are to be practised and not copied.

Look → cover → write

Books may be kept in reading records once they have finished them to help build fluency in your child's reading.

Reading



Star Primary is a reading school. We encourage children to read at least three books a week:

1. Their home school reading books (books taken to and from school every day)
2. A book from the school library or Bug Club
3. An Oxford Owl book available on the Oxford Owl platform - please see newsletters for year group log in reminders.

Please listen to your child read everyday and leave a comment on his/her reading record.

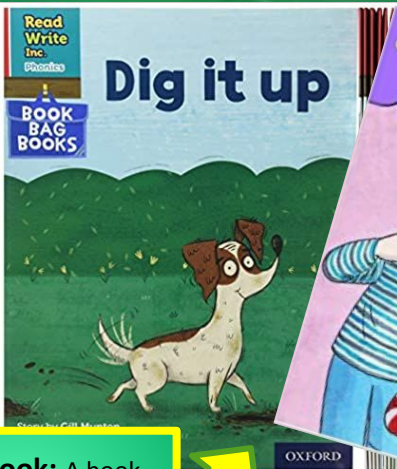
Home-School Reading: KS1



Home-School Reading record
For parents to record

Oxford Reading Tree book
linked to their reading band and exposes them to more high frequency words

Library Book/Class Library



Bridge book: A book that is decodable by the child and links directly to their phonics knowledge



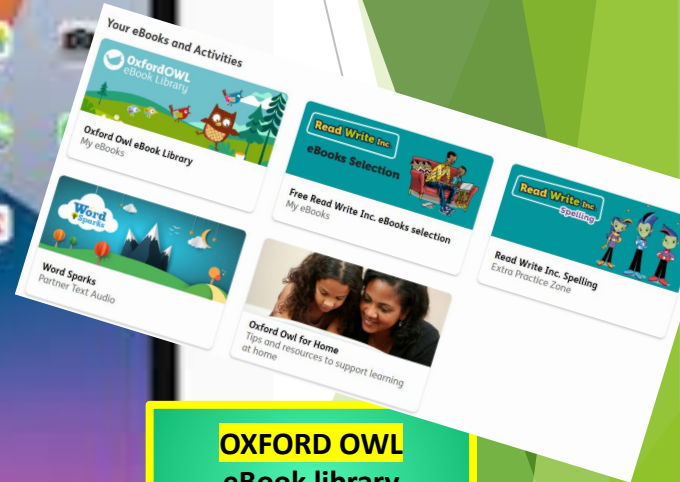
What's in your virtual book bag?



Bug Club
eBooks
Logins in reading journals



Phonics Videos to practice sounds
(EYFS & KS1)



OXFORD OWL
eBook library &
Spelling practise

General Information

Attendance and Punctuality

- ▶ Must arrive on time at 7:50 am ready to start learning at 8:00am. Year 2 onwards - pupils will sensibly make their own way upstairs to their classroom/greet pupils at the door.

Bedtime and breakfast

- ▶ Early bedtime for 9-10 hours sleep. Remove devices before sleeping.
- ▶ Brighter starts Breakfast snack!

Speaking to class teacher

- ▶ Teacher > Head of year > Phase leader.
(year2@star.newham.sch.uk)

'Every child has the right to an education.'

Article 28



Looking ahead

- ▶ Phonics screening check
- ▶ Tower of London Trip - **Monday 6th November (Class 2V & 2P)**
Friday 10th November (Class 2S)
- ▶ Year 2 Reading Morning - **TBC**

Questions

- ▶ We would like to answer your questions in detail so please email the school with your query or email to info@star.newham.sch.uk.
- ▶ Title: YEAR 2 PIM MEETING QUESTION

