



Nurturing &
growing together

Year 3 Autumn Term 2023

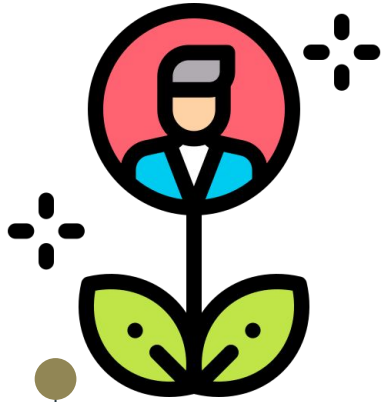
'Every child has the right to an education which must develop every child's personality.' **Article 28 and 29**

WE ARE ALWAYS TRYING TO IMPROVE LEARNING AND OUTCOMES AT STAR



*Each year we decide which parts of school need improving.
We decide what will have a **'BIG'** impact on your child's education.
Star's big five priorities for 2023/24 are...*

The Big Five



STAR PRIMARY'S 5 KEY LEARNING FEATURES:



Questioning



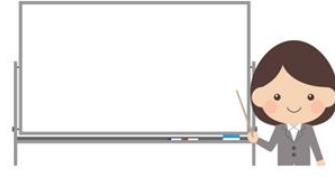
Scaffolding



Vocabulary



Strategic pairings



Modelling



All our teachers, support staff, lunch staff and leaders agree that these 5 ways support and challenge our children to be great learners.

Challenge for families-
Ask your children how teachers help them learn and see what they say?

Who is in the Year Group?



- ▶ Mr Ramonet - Phase Group Leader
- ▶ Miss Gordon - Year Group Leader
- ▶ Miss Locke - 3L Class Teacher
- ▶ Miss Roberts - 3R Class Teacher
- ▶ Miss Gordon - 3G Class Teacher
- ▶ Miss Julie - Teaching Assistant
- ▶ Miss Jerry - Teaching Assistant
- ▶ Miss Ebi - Teaching Assistant
- ▶ Mr John - Teaching Assistant
- ▶ Deputy Head with responsibility for the phase - Mr Carbutt

'Every child has the right to an education.'

Article 28




Attendance


- ▶ **FACT - Attendance is the key to success for our pupils.**
- ▶ We expect children to come to school **every day.**
- ▶ Your child only needs to be at home if *very unwell*. You must call the school if your child is unwell + the school will advise.
- ▶ Most winter illnesses, such as colds will pass and children should be in school. This is common at this time of year, in all children.
- ▶ Any other illness can be discussed with the pastoral team and advice can be given.
- ▶ **Persistent lateness, unauthorised absence and low percentages of attendance will result in fines and potential local authority involvement.**



EAT YOUR BREAKFAST AT STAR!



A breakfast snack for all pupils at 7:50 am!
Star will be providing a selection of breakfast options to boost energy levels and alertness, ready for learning.



Your child's brighter start will continue with singing in class which helps enhance memory and improve mental health. Singing also releases endorphins, serotonin and dopamine – the 'happy' chemicals that boost your mood and make you feel good about yourself!

We can't wait!





Autumn 1:



RIGHTS -WE ARE FOCUSING ON RESPECT
+ IN RSHE, BUILDING POSITIVE RELATIONSHIPS

More information about our unique curriculum can be found at

<https://star.newham.sch.uk/our-learning/curriculum/>



'Every child has the right to an education which must develop every child's personality.' **Article 28 and 29**

English

Cycle 1 *Linked to The proudest Blue*
Narrative

Character
Diaries
Simple stories

Character descriptions

Cycle 2 -
Women throughout history

Suffragettes
Present and inform
Speech competition

Maths

Place-Value
Using Dienes
Partitioning
Number patterns

Music:

Find the pulse within
the context of different
songs/music with ease.

Autumn 1:



History

How have women
contributed to
equality around the
world?

Suffragettes
who the Suffragettes
were and what they
were fighting for?

RSHE:

Positive relationships
Can I reflect on the positive
relationships, the attributes of
a positive relationship, how to
resolve conflict



Science

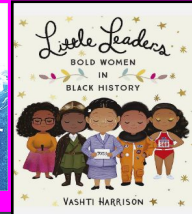
Scientist focus:: Forces and
magnets



Computing

Understanding computer
networks including the
internet;
how they can provide
multiple services,
Opportunities
communication and
collaboration

Sharing Reading



Art



Art focus: Artist study
Monet
Chn to look at the
landscape/sunset work of
Monet and try to emulate his
work using different media

RE

How are symbols and sayings
important in religion?
Theme: What can we learn
about special symbols and
signs used in special
religions?

PE:

Develop flexibility,
strength, technique,
control and balance [for
example, through
athletics and
gymnastics]



Autumn 2: Media Mayhem



RIGHTS -WE ARE FOCUSING ON INDEPENDENCE + IN RSHE, COPING SKILLS

More information about our unique curriculum can be found at

<https://star.newham.sch.uk/our-learning/curriculum/>



'Every child has the right to an education which must develop every child's personality.' **Article 28 and 29**

English

Cycle 1

Linked to journalism

Headlines

Sub-Titles

5W's

Adverts

Cycle 2 -Linked to

Computing

Letter Writing

(Formal)

Maths

The four operations

(addition, subtraction,
multiplication division)

Manipulating numbers

Reasoning and problem
solving

Music:

Christmas Concert singing
Vocal technique, breathing
and performance skills.
Throughout the whole half
term they will focus on their
singing, listening, performing

Autumn 2: Media Mayhem



History

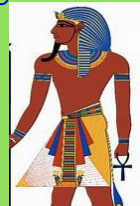
Who were the
Ancient Egyptians?



D and T

Big Question: How can I
design, make and evaluate
a moving Pharaoh using
levers and linkages?

safely measure, mark out,
cut, assemble and
join with
some accuracy



RSHE

Positive relationships

We will continue our work
on Positive relationships
building on the skills
acquired in Autumn 1.

Computing

using search engines
safely to research
topics.

Sending and receiving
emails

Online safety

RE:

How are symbols and
sayings important in
religion

What is the meaning and
importance of light, ?

Science

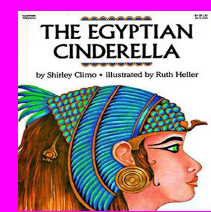
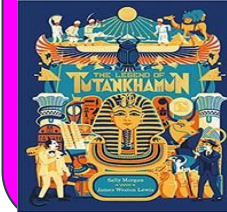
Light



Scientist focus:

Can I recognise that I need light in
order to see?
(investigating, identifying finding
patterns, drawing conclusions)

Sharing Reading



PE:

-Movement and music
skills. Work towards
precision of movement
and coordination.

VISITING A PLACE OF WORSHIP as part of Religious Education:

As part of enriching children's learning each year group is encouraged to visit a place of worship . Children are not asked to join in **any** of the prayers or ceremonies. Children are encouraged to look at the buildings, notice the similarities and differences between places of worship. This is supported by all religious leaders as stated in the Newham Agreed Syllabus that overpins the RE curriculum in Newham. Children visit the 6 main places of worship throughout their journey at Star. If you have any further queries please speak to the YGL or the RE leader at school.



Reading



Star Primary is a reading school. We encourage children to read at least three books a week:

1. Their home school reading books (books taken to and from school every day)
2. A book from the school library or Bug Club
3. An Oxford Owl book available on the Oxford Owl platform - please see newsletters for year group log in reminders.

Please listen to your child read everyday and leave a comment on his/her reading record.

Home-School Reading: LKS2



Home-School Reading record
For parents to record

Oxford Reading Tree book
linked to their reading band and exposes them to more high frequency words

Library Book/Class Library



Bridge book: For pupils who are still working on decoding and blending skills, a book that is decodable by the child and links directly to their phonics knowledge

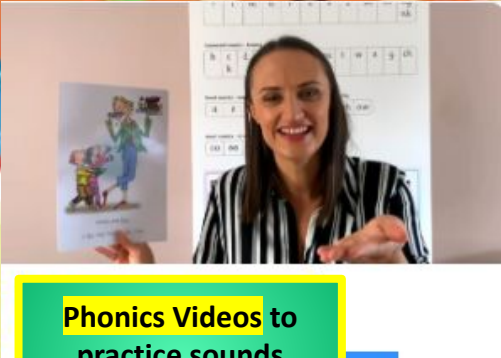
Michael Morpurgo
Snug



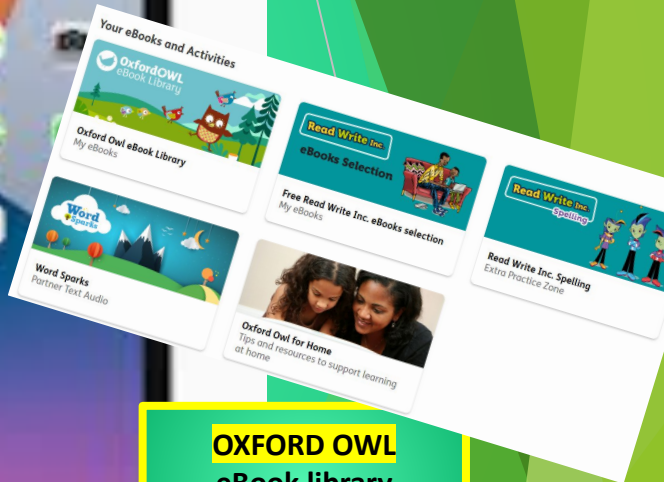
What's in your virtual book bag?



Bug Club
eBooks
Logins in reading journals



Phonics Videos to practice sounds (EYFS & KS1)



OXFORD OWL
eBook library & Spelling practise

General Information

Attendance and Punctuality

- ▶ Must arrive on time at 7:50 am ready to start learning at 8:00am. Year 2 onwards - pupils will sensibly make their own way upstairs to their classroom/greet pupils at the door.

Bedtime and breakfast

- ▶ Early bedtime for 9-10 hours sleep. Remove devices before sleeping.
- ▶ Brighter starts Breakfast snack!

Speaking to class teacher

- ▶ Teacher > Head of year > Phase leader.

year3@star.newham.sch.uk

Questions

- ▶ We would like to answer your questions in detail so please email the school with your query or email to info@star.newham.sch.uk.
- ▶ Title: YEAR 3 PIM MEETING QUESTION

