



Nurturing &
growing together

Year 5

Autumn Term 2023

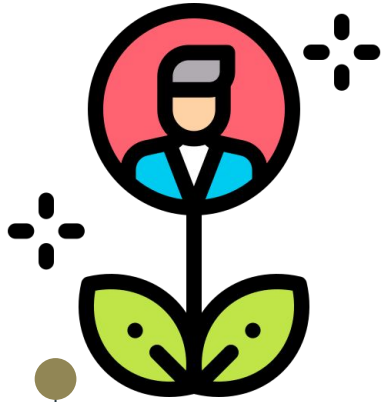
'Every child has the right to an education which must develop every child's personality.' **Article 28 and 29**

WE ARE ALWAYS TRYING TO IMPROVE LEARNING AND OUTCOMES AT STAR



*Each year we decide which parts of school need improving.
We decide what will have a **'BIG'** impact on your child's education.
Star's big five priorities for 2023/24 are...*

The Big Five



Attention +
engagement

Learning
Outcomes

Curriculum

Attendance

Climate Crisis



STAR PRIMARY'S 5 KEY LEARNING FEATURES:



Questioning



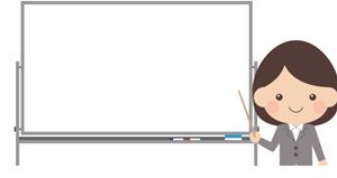
Scaffolding



Vocabulary



Strategic pairings



Modelling

All our teachers, support staff, lunch staff and leaders agree that these 5 ways support and challenge our children to be great learners.



Challenge for families-
Ask your children how teachers help them learn and see what they say?

Who is in the Year Group?



- ▶ Ms Williams - Phase Group Leader
- ▶ Mrs Noble - Year Group Leader / 5N Class Teacher
- ▶ Ms Rizvi - 5R Class Teacher
- ▶ Ms Rennie/Ms Khanom - 5RK Class Teachers
- ▶ Mrs Elliot - Teaching Assistant
- ▶ Ms Celestina - Teaching Assistant
- ▶ Deputy Head with responsibility for the phase - Mr Carbutt

'Every child has the right to an education.'

Article 28




Attendance



- ▶ **FACT - Attendance is the key to success for our pupils.**
- ▶ We expect children to come to school **every day.**
- ▶ Your child only needs to be at home if *very unwell*. You must call the school if your child is unwell + the school will advise.
- ▶ Most winter illnesses, such as colds will pass and children should be in school. This is common at this time of year, in all children.
- ▶ Any other illness can be discussed with the pastoral team and advice can be given.
- ▶ **Persistent lateness, unauthorised absence and low percentages of attendance will result in fines and potential local authority involvement.**



EAT YOUR BREAKFAST AT STAR!




A breakfast snack for all pupils at 7:50 am!
Star will be providing a selection of breakfast options to boost energy levels and alertness, ready for learning.



Your child's brighter start will continue with singing in class which helps enhance memory and improve mental health. Singing also releases endorphins, serotonin and dopamine – the 'happy' chemicals that boost your mood and make you feel good about yourself!

We can't wait!





Autumn 1:



RIGHTS -WE ARE FOCUSING ON RESPECT
+ IN RSHE, BUILDING POSITIVE RELATIONSHIPS

More information about our unique curriculum can be found at

<https://star.newham.sch.uk/our-learning/curriculum/>



'Every child has the right to an education which must develop every child's personality.' **Article 28 and 29**

English

Cycle 1

Narrative - children to plan and write their own narrative based on the story 'Malala's Magic Pencil'.

Cycle 2

Monologues - children to perform monologues based on a member of the 'Windrush Generation'.

Maths

- Place value
- Ordering and comparing numbers to 1,000,000
- Rounding
- Adding and subtracting within 1,000,000
- Finding factors, multiples and primes

Music:

- Children to learn new techniques and notes on their recorders
- Decoding music and playing it independently

Autumn 1:



History

What is the legacy of the Windrush Generation?

Learning about why they came over to Britain, what happened when they got here and why is it such an important story.

RSHE

Positive relationships - we spent our first week back looking at different ways to build positive relationships and the effect these have on our lives.

Art

Artist study - Van Gogh and Takasha Murakami

Portrait sketching and painting imitating the lines and tones of Van Gogh.

Evaluating and discussing own work.

Computing

How is IT being used for good in our lives?

Exploring the roles of computer systems and search engines.

RE

Big Question: What impact do beliefs have on actions?

Theme: How important is thankfulness?

Science

Earth and Space

- Exploring the movement of the earth and other planets relative to the sun
- Exploring movement of the moon
- Describing the sun, moon and Earth as spherical bodies
- Exploring the Earth's rotation to explain day and night

Sharing Reading

Windrush Child
- Benjamin Zephaniah

PE:

Gymnastics - learning key steps and developing flexibility, control and balance.
Basketball - learning tactics and rules.



Autumn 2: Media Mayhem



RIGHTS -WE ARE FOCUSING ON INDEPENDENCE + IN RSHE, COPING SKILLS

More information about our unique curriculum can be found at

<https://star.newham.sch.uk/our-learning/curriculum/>



'Every child has the right to an education which must develop every child's personality.' **Article 28 and 29**

English

Cycle 1

Newspaper Report writing - linked to WW2 history topic. Interviews/reported and direct speech, structure, audience and purpose.

Cycle 2

Blogging - linked to computing outcome. Diary writing via a blog as a WW2 soldier.

Maths

- Factors and primes
- Square and cube
- short/long Multiplication
- Dividing 2- and 3-digit numbers

Music:

Singing in the community
Christmas songs - focus on singing, listening, performing, appraising.

Autumn 2: Media Mayhem



History

World War 2

How did WW2 affect Britain?
Exploring sources of evidence and their reliability, lives of evacuees, identifying Allies and Axis powers, exploring food rationing.

D and T

Linked with History topic

Can I design, make and evaluate a toy WWII moving machine using mechanisms such as cams and motors?

- Researching existing products
- Investigating which materials make a sturdy structure
- Produce step-by-step plan
- Create moving vehicle
- Evaluate

RSHE

Positive relationships

Computing

Online Safety
Blogs - purpose and key features
Using Google Sites to create content

RE

What impact do beliefs have on actions?

How is Christmas celebrate around the world?
World Peace Day - mug design

Science

Forces

What can forces teach us about vehicle design?

- Exploring concept of gravity
- Effects of air and water resistance
- Planning and carrying out experiments on water/air resistance
- Exploring how levers, pulleys and gears affect forces acting on an object

Sharing Reading

Friend or Foe
- *Michael Morpurgo*

PE:

Dance
Football - skills and team building

Reading



Star Primary is a reading school. We encourage children to read at least three books a week:

1. Their home school reading books (books taken to and from school every day)
2. A book from the school library or Bug Club
3. An Oxford Owl book available on the Oxford Owl platform - please see newsletters for year group log in reminders.

Please listen to your child read every day and leave a comment on his/her reading record.

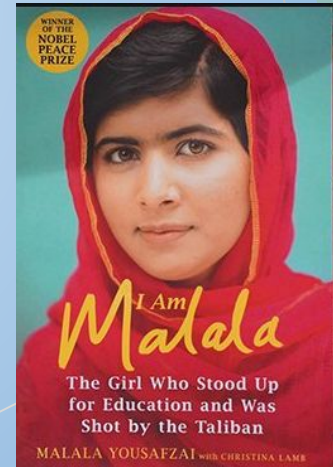
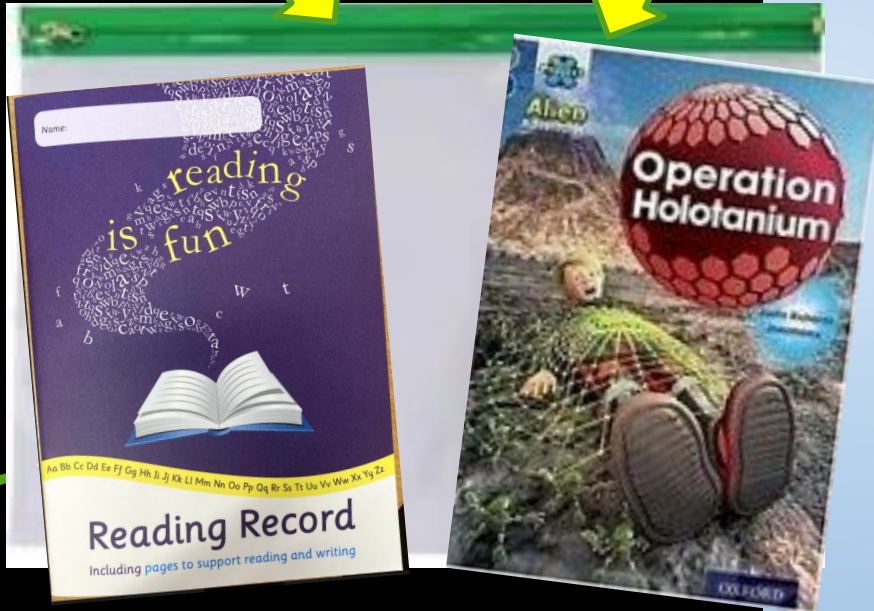
Home-School Reading: UKS2



Home-School Reading record
For parents to record

Oxford Reading Tree book
linked to their reading band.

Library/Class Library



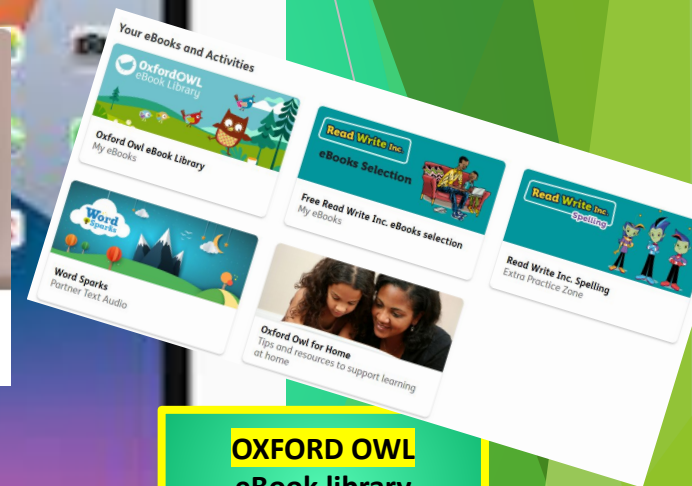
What's in your virtual book bag?



Bug Club
eBooks
Logins in reading journals



Phonics Videos to practice sounds (EYFS & KS1)



OXFORD OWL
eBook library & Spelling practise

'Every child has the right to an education.'

Article 28

Looking ahead



- ▶ Swimming commences on 2nd October for 2 weeks.
 - ▶ Children **MUST** be at school by 7:45am (go straight to court for registration)
 - ▶ Kit list
 - ▶ Please ensure any medication (e.g. inhaler) is in school
 - ▶ London Aquatic Centre by DLR to Stratford
- ▶ Various secondary school transition activities arranged throughout the year (mainly Eastlea)

VISITING A PLACE OF WORSHIP as part of Religious Education:

As part of enriching children's learning each year group is encouraged to visit a place of worship . Children are not asked to join in **any** of the prayers or ceremonies. Children are encouraged to look at the buildings, notice the similarities and differences between places of worship. This is supported by all religious leaders as stated in the Newham Agreed Syllabus that overpins the RE curriculum in Newham. Children visit the 6 main places of worship throughout their journey at Star. If you have any further queries please speak to the YGL or the RE leader at school.



General Information

Attendance and Punctuality

- ▶ Must arrive on time at 7:50 am ready to start learning at 8:00am. Year 2 onwards - pupils will sensibly make their own way upstairs to their classroom/greet pupils at the door.

Bedtime and breakfast

- ▶ Early bedtime for 9-10 hours sleep. Remove devices before sleeping.
- ▶ Brighter starts Breakfast snack!

Speaking to class teacher

- ▶ Teacher > Head of year > Phase leader.
(Year5@star.newham.sch.uk)

Questions

- ▶ We would like to answer your questions in detail so please email the school with your query or email to info@star.newham.sch.uk.
- ▶ Title: YEAR 5 PIM MEETING QUESTION

