



# Weekly Newsletter

Friday 20th September – Issue 3

## Head Teacher's Message

Dear Parents and Carers,

This week I found myself on the wrong side of a particularly nasty flu virus and would like to say a special **THANK YOU** to my amazing team at the school for running things so smoothly. I was very sad to miss a few PIMs but I wanted to say thank you to those of you who were able to attend our Parent Information Meetings (PIMs). If you were unable to attend, you can find all the information shared on our website [here](#).

We have been struggling with a few **persistent cases of lateness** in the mornings and also at **collecting children at the end of the day**. At the start of each day, admin staff have specific duties to do and cannot spend 15 minutes each day taking children down to classes. As such, we are going to need to **change the procedures** to ensure that children are dropped off to school before 8am. **From Monday, the gates will be closed after 8am and parents will have to wait with their children outside the gate until we have a member of staff available to take them in and down to class.** Our first assembly starts at 8:10am on Monday mornings and children cannot be walking through the assemblies at this time. For the first week of this new arrangement, you will receive a parentmail message in the morning to remind you to set off from home in good time.

As the weather is getting colder and pupils start to wear more layers please may we remind parents to label every coat, hat, scarf, glove etc. Trying to find a lost item amongst a sea of lost property is difficult enough already without the added task of finding unnamed clothing. Please use a permanent marker to label the inside of clothing.

Tomorrow our Star Glee Choir will be performing at Cody Dock during their Lighting Up The Lea open day. Our singing Stars are schedule to go on at 3:15pm

**Have a wonderful weekend.**

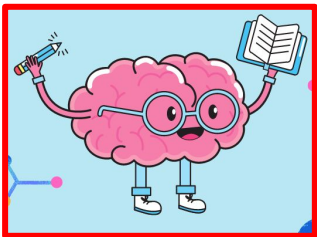
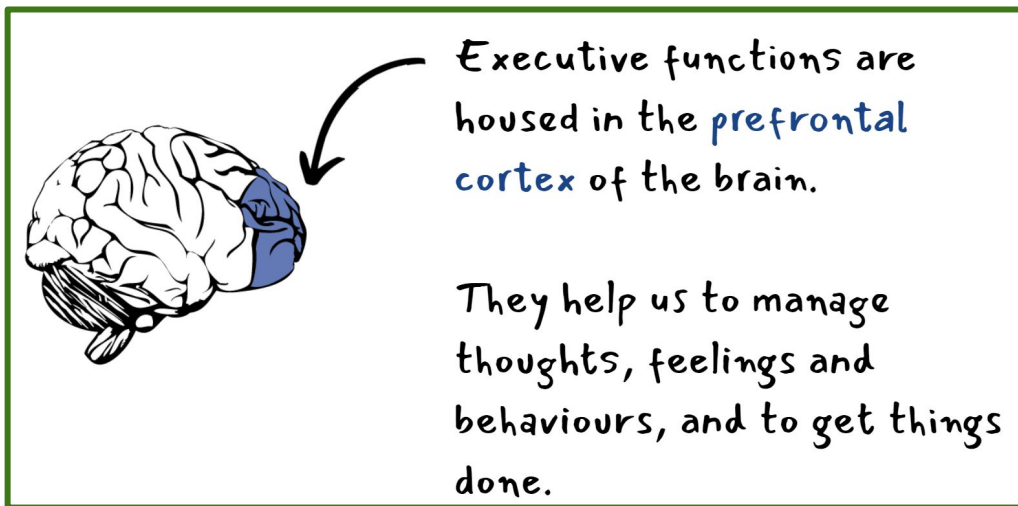
Ms Von

**Nurturing and Growing Together**

# WHAT ARE EXECUTIVE FUNCTIONS?

Star  
Primary  
School

*During the PIM meetings we explained that one of our school priorities is to improve children's understanding of how they learn. This will involve learning about Executive Functions.*



We will all have **strengths** and **weaknesses** and, our brain is **malleable**. This means that we can keep on building on and developing our executive functions.

Executive functions include... **organisation, task initiation, emotional control, sustained attention and time management** ...in fact, there are 11 in total and your children will begin to learn the names and find out which ones they have strengths in and which they find more challenging.

This year we will begin to help your children learn strategies to improve their weaker Executive Functions.

# INTRODUCING.....

Star  
Primary  
School

## HOW ARE WE GOING TO HELP PUPILS AT STAR UNDERSTAND THEIR STRENGTHS + WEAKNESSES?



**Here are our new Star pupils.** Each of these characters have Executive Function skills that they are particularly great at.

Persevering Peter, the giraffe, is great at **problem solving**.  
Independent Izzy, the elephant, is great at **organisation** and **starting a task**.

### Top tip for this week

**Challenging Chu**, the panda, is great at **time management**.  
*Please can you model great time management to your children as you strive to improve lateness and attendance.*



# Glee Choir Performance

Star  
Primary  
School



## Lighting Up The Lea Open Day

**21** SEPT 2024  
11AM-7PM

*Celebrating the Lea*



Featuring

**LIVE FOLK MUSIC with FLOTSAM SESSIONS on the Main Stage**

**SEA SHANTIES with THE HOG EYE MEN**

**RIVER OF HOPE & STAR PRIMARY CHOIRS & Newham Music**

**CODY DOCK CRAFTING WORKSHOPS & GUIDED TOURS**

**THAMES IRONWORKS BOAT HERITAGE EXHIBITION**

**ROLLING BRIDGE DEMONSTRATIONS**

**YOUR RIVER LEA PHOTO COMPETITION**

**DJ BRIMA on the HOT TUB STAGE**

**'Fragile Ecosystems' Film Screening**

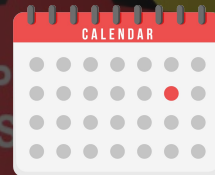
**CODY DOCK 11C SOUTH CRESCENT LONDON E16 4TL**

**WWW.CODYDOCK.ORG.UK**

**Totally  
Thames  
2024**



# Dates for the Diary



**21/09/24** - Star Glee Choir performing at Cody Dock

**26/09/24 - 03/10/24** - Star Book Fair

**30/09/24 - 04/10/24** - Year 6 Residential Visit

**23/10/24** - Parents Evening

**28/10/24 - 01/11/24** - School closed for half-term

## Parent Information Meetings (PIMS)

**25/09/24** - 8:00am

Nursery AM

**25/09/24** - 2:00pm

Nursery PM



# CHALLENGING CHU

# Attendance at Star

Did you come to school everyday this week?

Which classes achieved the highest attendance?

Who will get the attendance cup?

## Last Week's Results

### Reception

RF - 91.6%

RU - 91.9%

### Year 1

1B - 93%

1D - 98.3%

1S - 96.7%

### Year 2

2B - 91%

2P - 97.3%

2R - 92.9%

### Year 3

3B - 97%

3L - 95.6%

3N - 100%

### Year 4

4H - 92%

4L - 99%

4N - 87.9%

4S - 88.7%

### Year 5

5G - 88.4%

5R - 97.9%

5T - 96.4%

### Year 6

6P - 91.8%

6R - 89.5%

6RK - 89.3%

6S - 99%

Whole school attendance - 94%

# House Points

Teachers, lunch staff, support staff, school leaders and our office team have been awarding house tokens all week. Pupils have received tokens if they have demonstrated children's rights, shown good leadership skills and have excellent learning behaviors.

Congratulations to the winning house... results below!

## LAST WEEK'S RESULTS




Da Vinci

**376**



Monet

**436**



Picasso

**287**



Van Gogh

**228**



**WINNING  
HOUSE**

**MONET**